

PRM/KA/RERA/1251/309/PR/200923/006268
www.rera.karnataka.gov.in



HIGH LIFE TOWERS

COME HOME TO PURE INDULGENCE



MEENAKSHI
BUILDING CONSCIOUS HOMES

A World of Positive Energy

Experience the magic of good fortune and live the life you deserve! From spacious homes to beautiful landscaping, everything has been designed keeping in mind the principles of Vastu that promote positive energy, good health, and prosperity.



Green, Clean, and Serene

Step into a world of tranquility and embrace nature surrounded by lush greenery.

With vast open areas of green pockets, this property perfectly balances peaceful country living and urban convenience.

Come take a closer look at this delightful place and make sure why it is the ideal home for you!



Project Insights



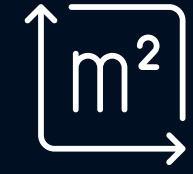
Towers: 2



Amenities
and Services: 46+



Total Units: 313



Total Area: 3.7 Acres



Sizes:
1096 - 3004 Sft



Dense trees and
plantation



Floors:
2 Basements+G+14



Heated
Swimming Pool



Type:
2, 2.5, 3 and 4 Bhk



Community: Pet-Friendly
and Life Style
Centric



Location: Rachenahalli
(Near Manyata Tech Park,
Gate No 5)

Builder Profile

With our roots tracing back to the year 2000, we are a prominent player in the real estate sector, stationed in Bangalore with an impressive portfolio of projects spread across Bangalore and Hyderabad. Backed by over two decades of unrivaled experience in the residential real estate industry, we pride ourselves on delivering exceptional quality construction, exquisitely designed spacious homes nestled in the most sought-after neighborhoods, and, most significantly, a foundation of trust and empathy that fosters countless moments of joy and satisfaction amongst our customers. Our strong customer network serves as a testament to our unwavering commitment to providing exceptional service.

Vision

- To create homes that are innovative, sustainable, and responsive to the needs of our clients.
- To be recognized as a leading residential property builder in the industry.
- To establish long-term relationships with our clients by delivering exceptional customer service.
- To contribute to the growth and development of the communities in which we operate.

Core Values

- We hold ourselves to the highest ethical standards, acting with transparency, honesty, and integrity in all our dealings.
- We are committed to delivering quality construction, materials, and workmanship that meet the highest standards.
- We are dedicated to using environmentally friendly and sustainable practices to minimize environmental impact.
- We strive to be innovative and creative in our approach to construction and design, using the latest technologies to create unique homes.





At Meenakshi we have explored various fields within the residential real estate sector, consistently keeping up with trends and prioritizing design and customer satisfaction. We take pride in our commitment to these values and strive to exceed expectations in all of our projects.





What Goes Into Creating the Future

1. Biophilic Design

The use of Biophilic design breathes life into this structure. Natural elements like sunlight streaming through large windows, and organic materials create a balance between nature and architecture. You'll feel refreshed just by stepping inside!

2. Digital Building Design

We understand that safety and accuracy are the most important factors when it comes to construction. That's why we go to great lengths to ensure that every detail is meticulously accounted for, so you can enjoy the beauty of your project inside and out with complete peace of mind.

3. Energy-Efficient Design

Our construction process incorporates the latest technologies to ensure that our buildings are constructed with the environment in mind. From insulation, windows, and lighting to air-conditioning and beyond, every aspect of our construction has been designed with energy efficiency in mind. Additionally, we have implemented various energy-efficient technologies such as energy-efficient lighting, water treatment plant, rainwater harvesting, and storage. As a result, we strive to impact the environment with each project positively.

Neighborhood

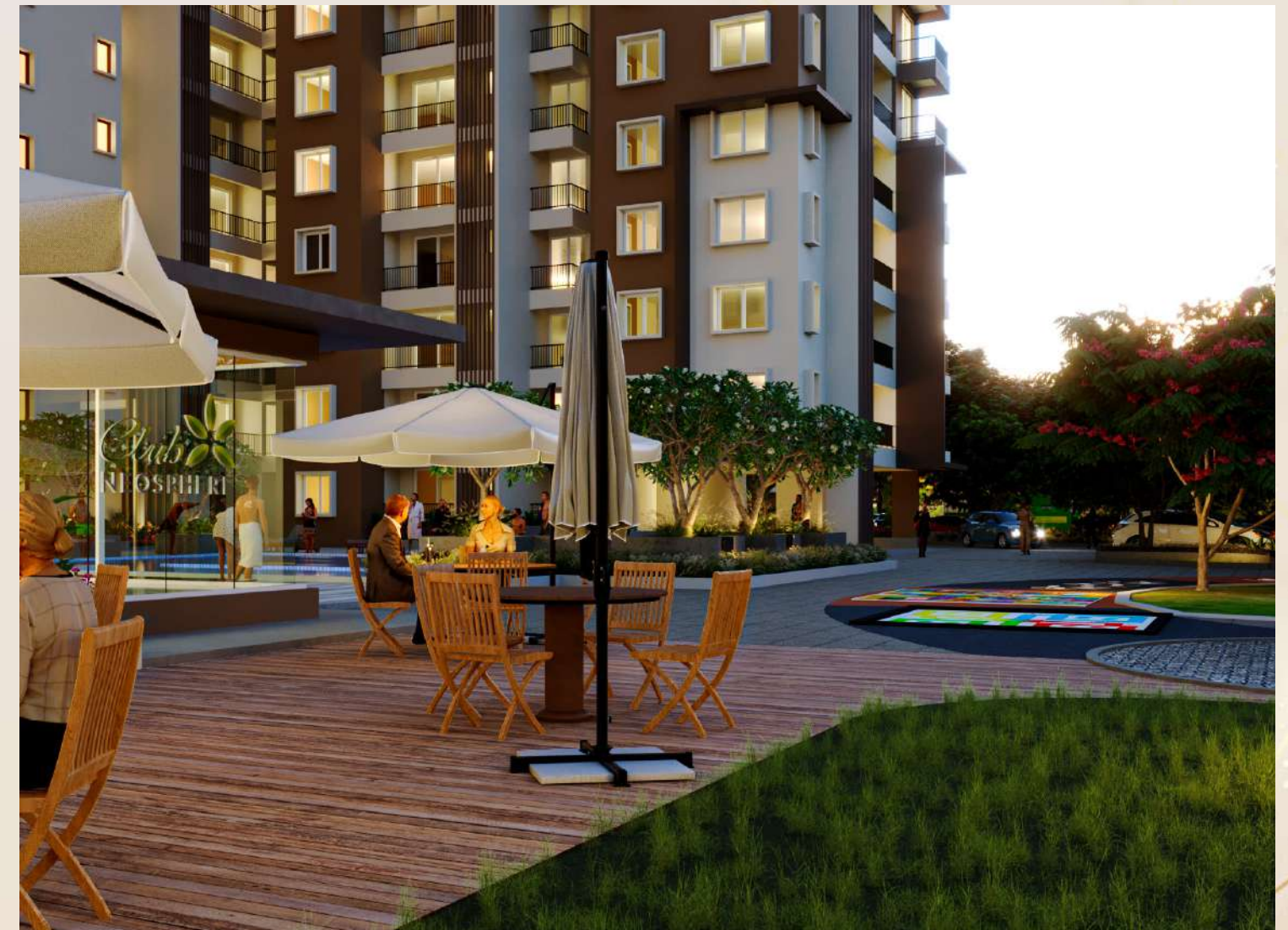
High Life Towers stands tall as a beacon of luxury and comfort. Just a stone's throw away from Manyata Tech Park, Experience the convenience of lightning-fast commutes to the heart of the city with High Life Towers, located just a mere 30 minutes or less from the bustling Central Business District and the vibrant MG Road, making everyday living effortless yet fulfilling. With the upcoming Metro station and walk-to-work concept, one can experience the convenience of world-class amenities without compromising on accessibility.

The project offers a serene environment with lush green surroundings near Rachanahalli Lake, adding extra charm to the area. Moreover, it is close to shopping malls, IT parks, and educational institutes making it ideal for young professionals and families. Enjoy added benefits such as a swimming pool, gymnasium, clubhouse, etc. while your children can access some of Bengaluru's best schools and play areas within the vicinity. With its strategic location near Hebbal and Manyata Tech Park, High Life Towers is your gateway to unprecedented convenience within reach!



Community Living - Discover the High Life at High Life Towers

"High Life Towers" - the perfect place to live life to the fullest! Whether independent living with no two flats facing each other, a terrace garden, a car wash facility, or a pet park - High Life Towers has you covered! Plus, plug-and-play work spots, a creche, guest rooms, and driver rooms are all available in the community. What's more? Limited, luxuriously crafted 4BHKs are also available with a storeroom and servant room, all with spacious balconies. Life at High Life Towers is an experience like no other - so come and join the select few who truly get to live life to the fullest!



Building Conscious Spaces

Embrace mindful living at High Life Towers. Our expansive space is designed to help you elevate your lifestyle and cultivate a sense of awareness in all aspects of life!

Escape the Everyday and Experience
Luxurious Living Like Never Before



1. Unwind in our Luxurious Club Neosphere

Experience the best of entertainment and relaxation at Meenakshi the soon-to-be Neosphere. With a pool table, comfortable seating, and complimentary Wi-Fi, there's no shortage of fun activities to enjoy.

2. Celebrate Life in the Multipurpose Party Hall

For those special occasions, we have an exquisite banquet hall - perfect for hosting grand celebrations or business gatherings.





3. Swim Happy, Swim Healthy

Our heated pool with advanced ozone filtration is the perfect place to swim year-round. Dive in, relax in comfort, and soak up the luxury while enjoying crystal-clear water that's gentle on your skin and the planet.



4. All-In-One Sports Court

Challenge your friends and family to some friendly competitions on our multipurpose court! Whether it's basketball or tennis you're after, we have it all here.

5. Sun Bath with Zen Garden

Get your dose of Vitamin D and heal your body from the inside out with a sunbath on the terrace / Zen Garden and reap the health benefits.



6. Unwind in Total Relaxation

Refresh your body and soul at the spa with natural ingredients and refreshing oils to calm your senses and balance your emotions!





Terrace Garden-Create Memories that Last a Lifetime

Our residential property offers the intimacy of a private abode, with its exclusive terrace garden ideal for hosting intimate gatherings. Add an extra dash of class to special events by taking advantage of this stunning outdoor space - what could be more charming than finding yourself in your very own secret escape?



Themed Gardens (Sensory garden)

Indulge in a sensory journey through our themed gardens, where every corner unveils a new delight for your eyes, nose, and ears, and every moment brings you closer to inner peace.



Pet Park

Imagine a place where your furry friend can run free and make new friends, a place where tails wag and paws play.

Welcome to the pet park at our gated community, the perfect spot for a playdate, a picnic, or a relaxing evening. With the pet park, we bring the outside in for you and your best friend to enjoy together.



Kids Garden

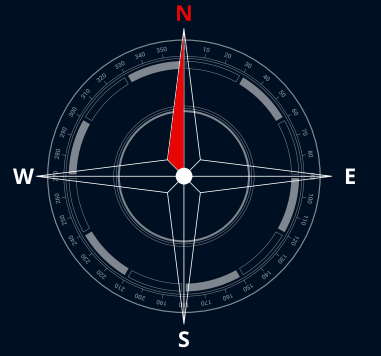
Bring your little ones closer to nature with our exclusive farming pockets! Together, Plant vegetables & herbs and teach them how to grow their own food, spices, herbs, etc. Let your little ones explore the wonders of nature while they develop a deeper appreciation for the environment and a connection to where their food comes from.

Location Map

Disclaimer location map not to the scale



Floor Plans



TOWER 1



TOWER 2



Masterplan

A Walkthrough of our Magnificent Ambience

Clubhouse Amenities

- 01. Multipurpose Hall
- 02. Gymnasium
- 03. Yoga/Aerobics
- 04. Billiards
- 05. Table Tennis
- 06. Cards/Carrom
- 07. Health Club
- 08. Creche (Provision)
- 09. Business Center
- 10. Guest Rooms
- 11. Admin/Reception
- 12. Swimming Pool
- 13. Saloon (Provision)

Service

- 14. Entry/Exit
- 15. Security Cabin
- 16. Pedestrian Entry
- 17. Bus Bay
- 18. Entry Plaza
- 19. Signage Wall
- 20. Service Screening
- 21. Transformer Yard
- 22. Ramp to Basement
- 23. Ramp from Basement
- 24. Block Entry with Plaza

Common Amenities

- 25. Guest Car Parking
- 26. Cycle/Jogging Track
- 27. Cycle Parking
- 28. Two-Wheeler Parking
- 29. Car Wash (Provision)
- 30. EV Charging (Provision)
- 31. Maid & Driver Toilets

Recreational Amenities

- 32. Water Body
- 33. Pavilion with Seating
- 34. Provision for Outdoor/Cafeteria
- 35. Pet Park
- 36. Lawn/Yoga Lawn
- 37. Party Lawn

Terrace

- 38. Entry/Exit
- 39. Seating Area/Chit Chat Zone
- 40. Bar Counter/Food Counter
- 41. Barbeque Counter
- 42. Zen Garden
- 43. Stargazing - Sun Loungers
- 44. Service Entry

Children's Play Area

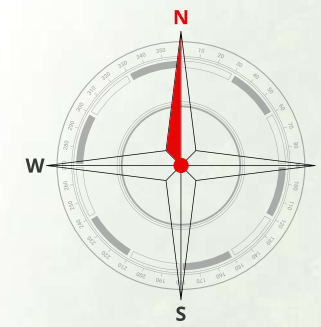
- 45. Sand Pit with Play/Equipment (2-5yrs)
- 46. Tot Lot Area on EPDM
 - Hopscotch
 - Giant Chess
- 47. Multi-Purpose Court
- 48. Cricket Practice Net
- 49. Childrens Play Area On/Lawn (5-12yrs)
- 50. Swing Park on Lawn

Pool Area Amenities

- 51. Adults Pool With Infinity/Edge and Heating
- 52. Kids Pool
- 53. Pool Deck
- 54. Jacuzzi

Elder's Zone

- 55. Reflexology Pathway
- 56. Outdoor Gym
- 57. Meditation Pavilion
- 58. Kids Farming
- 59. Palm Court
- 60. Sensory Garden
- 61. Herbal Garden
- 62. Amphitheater



Specifications

STRUCTURE

- › Seismic Zone-II complaint R.C.C framed structure designed as per relevant B I S codes.

WALLS

- › External Walls with 6"/8" Solid Concrete Blocks.
- › Internal Walls with 6"/4" Solid Concrete Blocks as per design.

PLASTERING

- › Double coat sponge finish for external walls.
- › Smooth plaster finish for internal walls.

DOORS

- › Engineered Hard wood frames, wooden/veneer Designer shutters or equivalent for main Door.
- › Engineered Hard wood frames for other doors with designer shutters with Veneer/Laminated finish on outside and Veneer/Laminated finish on inside.
- › UPVC Sliding Doors for Balconey with provision for mosquito mesh.
- › UPVC Doors for Utility.

WINDOWS

- › UPVC windows of reputed make with provision for mosquito mesh.
- › Toilet Ventilator - UPVC with exhaust provision.

FLOORING

- › Polished/Double charged vitrified tiles flooring with 3" skirting all around in Living, Bedrooms, Dining and other areas inside the flat. Anti skid tiles in the balcony as per design.
- › Anti-skid tiles in Kitchen.
- › Common Areas: Reception/Lift Lobby/Entry/Lobby/Corridors will be Graite/Vitrified Tiles as per design.

GENERATOR

- › 1 KVA power back up will be provided for each unit.
- › 100% DG backup power for lifts,pumps & lighting in common areas.

COMMUNICATION

- › Telephone & TV points in master bedroom and living rooms.

KITCHEN / UTILITY

- › Provision for Water inlets/outlets, Water purifier, Refrigerator and chimney.
- › Granite Counter and Wall Dado will Not be provided.

TOILETS

- › Anti-skid ceramic tiles for flooring and Ceramic tiles for Dado with edge profiles up to false ceiling, ISI EWC/Wash basin of Standard reputed Brand sanitary fixtures, Chromium plated fittings in all bathrooms will be provided.

ELECTRICAL

- › Concealed copper wiring.
- › Modular switches with adequate light, fan, geyser points.
- › Power socket for air conditioners in master bedroom. provision will be made in living & other bedrooms.

LIFTS

- › Passenger & service lifts of reputed brand will be provided in each block as per design.

FIRE

- › As per fire norms.

SECURITY

- › Round the clock security system.
- › CCTV cameras in all common areas at ground level.
- › Intercom facility connecting security to all flats.
- › Video door phone.

PAINTING

- › Oil bound distemper/emulsion/Cement Finish for internal walls.
- › External grade emulsion for external walls.
- › Enamel paint for M S Railings.

From Renowned Consultants

Architects -



Landscape -



MEP -



Structural -



PMC -



Interior Concepts -



Thank You!



Office Address:

Survey no: 81/2A, 81/2B, 81/3B, Off Thanisandra Main Road,
Rachenahalli village, Behind Manyata Tech Park, K R Puram Hobli
Bengaluru, Karnataka - 560077

Meenakshi sales contact number - +91 9611 748 826

✉ info@meenakshirealty.com | sales@meenakshirealty.com

🌐 www.meenakshirealty.com